



Stock Code: 688333.SH

MAKE EASIER MANUFACTURING
MAKE A BETTER WORLD

Metal Additive Manufacturing System

BLT-S510/S515



ISO9001:2015 / ISO14001:2015 / ISO45001:2018

Breakthrough Build Limit, Aim for the Highest

Selecting Excellent Components

Stable Full-substrate Printing

24-hour Unattended Operation

Large-size and High-quality Production

More Valuable after Multiple Tests



Multi-batch Iteration Batch Application Verification
Maturity and stability of system operation



Large Build Dimension
Additive manufacturing breaks the height limit



Multi-beam Lasers Seamless Splicing
The building quality of each area is consistent



Hard Scraper
The building quality of each area is consistent



Permanent Filtration System
Filter's life lasts for 10 years

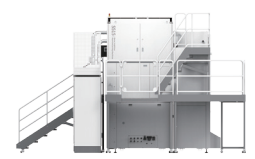


Self-adapting Powder Spreading Correction
Deep learning technology makes printing smarter



Powder Supply System
Automatic powder adding uninterrupted production

Supporting Materials	Titanium Alloy, Aluminum, Superalloy, Stainless Steel, High-strength Steel, Tool Steel
Build Dimension ⁽¹⁾	500mm×500mm×1000mm (W×D×H) (BLT-S510) 500mm×500mm×1500mm (W×D×H) (BLT-S515)
Laser Power	500W×4; 500W×6
Wave Length	1060nm-1080nm
Layer Thickness	20μm~100μm
Maximum Scanning Speed	7m/s
Building Speed ⁽²⁾	100cm ³ /h; 150cm ³ /h
Preheating Temperature	RT +20°C~100°C
Beam Quality	M ² <1.1
Optics System	F-theta Lens
Recoating	Single/Double Recoating System
Minimum Oxygen Content	≤100ppm
Gas Requirement	Ar
Power Requirement	≤12kW; ≤15kW
Supply Voltage	AC380V 3Ph/N/PE
Dimension of the System	5540mm×5600mm×3800mm (W×D×H) (BLT-S510) 6240mm×5072mm×4056mm (W×D×H) (BLT-S515)
Weight of the System	Approx. 11500kg(BLT-S510) Approx. 21500kg(BLT-S515)
Software	Magics; BLT-BP; BLT-MCS



Citations: (1)Excluding substrate thickness; (2)Dependent on part geometry, material and parameter set used.



Stock Code: 688333.SH

MAKE EASIER MANUFACTURING
MAKE A BETTER WORLD

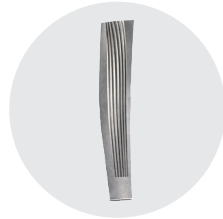
➤ BLT-S510/S515 APPLICATIONS



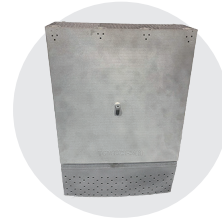
Aero-Engine
Fan Blades



Fan Blade
Hemming



Fan Blade



Rail Bracket



Hydrazine
Bottle Adapter

➤ BLT-S510/S515 INTELLIGENT MODULES

Standard Functions

Self-diagnosis Fault-grading/Full Printing Process Traceability/Height Self-checking on Parts/
Powder Spreading Quality Control/3D Reconstruction

Optional Functions

BLT-MCS Third-party Interconnection/BLT-MES System

➤ BLT-S510/S515 AUXILIARY MACHINES



Powder Sieving Machine
BLT-SF800



Powder Collection Machine
BLT-WL400



Powder Adding Machine
BLT-GF300

➤ BLT-S510/S515 CONSUMABLES AND POWDERS

Consumable

Scraper/Substrate

Powder

Titanium Alloy/Aluminum/Superalloy/Stainless Steel/High-strength Steel/Tool Steel