



Stock Code: 688333.SH

MAKE EASIER MANUFACTURING
MAKE A BETTER WORLD

Metal Additive Manufacturing System

BLT-S800



ISO9001:2015 / ISO14001:2015 / ISO45001:2018

The Pillar of, "BRIGHT", Dancing with the Lasers

Selecting Excellent Component | Full-format Printing Stably | Unattended Operation for 24 hours | Large-size and High-quality Production | More Valuable after Multiple Tests



Large Build Dimension
The component of complex feature can be integrated formed



Multi-beam Lasers Seamless Splicing
The forming quality of each area is consistent



Permanent Filtration System
Filter's life is over 100,000 hours



Powder Supply System
Intelligent detection Modularized powder storage mechanism



Self-adapting Powder Bed Correction
Deep learning technology makes printing smarter



Hard Scraper
Fixed layer thickness Adhere to the quality



Redundant Set Design of Oxygen Sensor
Multiple safety protection design Undistorted key parameters

Supporting Materials	Titanium Alloy, Aluminum, High Temperature Alloy, Stainless Steel, High-strength Steel, Tool Steel
Build Dimension ⁽¹⁾	800mm×800mm×600mm(W × D × H)
Laser Power	500W×6; 500W×8; 500W×10
Wave Length	1060nm-1080nm
Layer Thickness	20μm~100μm
Maximum Scanning Speed	7m/s
Building Speed ⁽²⁾	150cm ³ /h
Preheating Temperature	RT +20°C~100°C
Beam Quality	M ² <1.1
Optics System	F-theta Lens
Recoating	Single/Double Recoating System
Minimum Oxygen Content	≤100ppm
Gas Requirement	Ar/N ₂
Power Requirement	≤22KW
Power Supply	AC380V 3Ph/N/PE
Dimension of the System	5700mm×5000mm×4400mm(W×D×H)
Weight of the System	About 24300kg
Software	Magics; BLT-BP; BLT-MCS



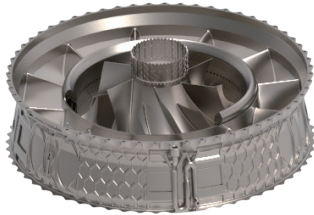
Citations: (1)Excluding substrate thickness; (2)Dependent on part geometry, material and parameter set used.



Stock Code: 688333.SH

MAKE EASIER MANUFACTURING
MAKE A BETTER WORLD

➤ BLT-S800 APPLICATIONS



Engine Integration

Material: High-temperature Alloy

Size: $\Phi 800\text{mm} \times 400\text{mm}$

Weight: 27kg

Duration: Printing for 175 hours with six lasers

Taking aero engines as the basic configuration carrier, the product combines the advantages of additive manufacturing with high flexibility design and the principle of additive manufacturing process adaptability. Through integrated design, it integrates typical complex features such as light-weight, spatial multi-scale structures, special-shaped curved surfaces, flow channel, etc. This product finally realizes the overall preparation of large-size components and partial flexible mobility features.

➤ BLT-S800 INTELLIGENT MODULES

Standard Configuration

Self-diagnosis Fault-grading/Full Printing Process Traceability/Working State Maintenance by UPS in Case of Power off / Powdering Quality Control Module/ Height Self-checking on Parts

Optional Configuration

BLT-MCS Third-party Interconnection/3D Reconstruction Function
/BLT-MES System

➤ BLT-S800 AUXILIARY MACHINES



Powder Sieving Machine
BLT-SF400C



Vacuum Material Machine
BLT-VC35



Purifier
BLT-QF600A



Powder Supply System
BLT-PC300A

➤ BLT-S800 SUPPORTING CONSUMES

General Consumes

Scraper/Substrate/Filter Element

Powder

Titanium Alloy/Aluminum/High Temperature Alloy/Stainless Steel
/High-strength Steel/Tool Steel