

# VERSATILE PRINTER 100 PRO

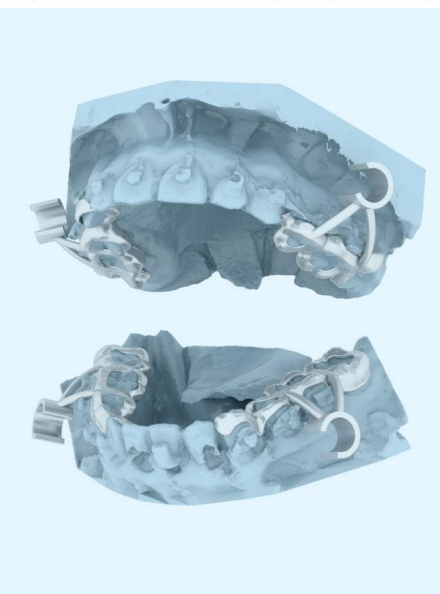
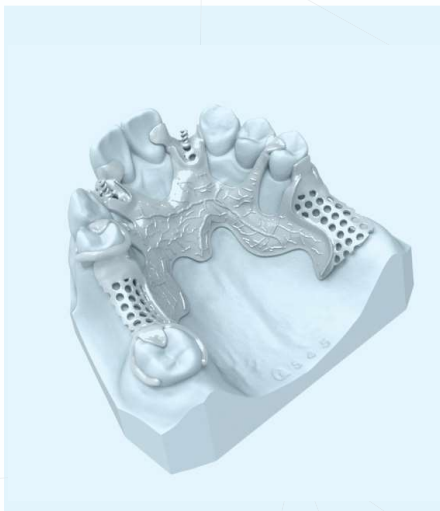
Support either Titanium or Cobalt-Chromium

For crown/coping and partial frame



## Versatile Printer 100 Pro

Usable construction volume	Φ=120 mm, z=70 mm
Layer thickness	20–50 μm
Scanning speed	15 m/s (max.)
Productivity	130 copings/3.5–4.5 hrs
	10 frameworks/3–3.5 hrs
Laser type	Yb-fiber laser, 300 W
Focus diameter	50–80 μm
Power	AC220 V, 16 A; 2.5 kW
Shielding gas	<4L/min (Nitrogen, Argon)
System size	900*680*1760 mm
Weight	600 kg
Operating temperature	18–30 °C
Materials	Titanium or Cobalt-Chromium Alloy
Products	Crowns, copings, frameworks, etc



### Dedicated dental metal 3D printer

- Dual-mode printer for CoCr and Ti, able to switch between two material daily;
- Easy to start with CoCr mode and able to update to dual-mode later on;
- High precision to support partial framework, crown, copings, post, surgical guide, orthodontic appliance;
- Customized building thickness according to customer demand (50–80 μm).

### Complete process support and professional

- Over 5 years of testing in the field, well integrated in lab process;
- Provide integrated sieving instrument for titanium printing;
- Provide nitrogen generator for CoCr printing;
- Provide dedicated dental slicing software for copings and framework for best fitting and working efficiency; automated identity generation for printed objects for traceability;
- Provide emergency management system with remote diagnostic center and mobile APP.

### Support digital dentistry

- Well integrated with removable partial denture design software;
- Provide consulting and training services for digital dentistry, including surgical guide and orthodontic appliance;
- Assist clients' business process optimization from conventional casting to digital dentistry.



Web: [www.profeta.cn](http://www.profeta.cn)

Email: [service@profeta.cn](mailto:service@profeta.cn)

Add: No.12 Mozhou East Road, Jiangning, Nanjing, China