

# INTELLIGENT & EXPERT

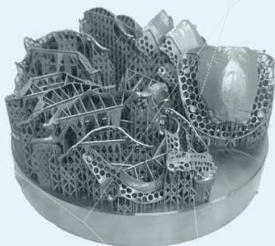
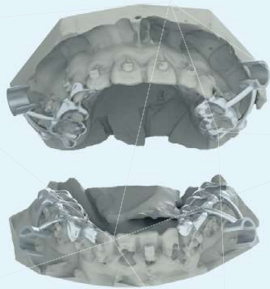
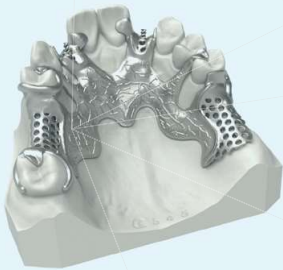
## 3D Printer in metal

For crown/coping and partial frame



## INTELLIGENT&EXPERT 150 (IE150)

Usable construction volume	Ø150 mm, H=80 mm
Layer Thickness	20-60 $\mu\text{m}$
Scanning speed	Up to 15m/s
Productivity	240 copings / 2.5 hrs
	12 partial frames/2.5-3.5 hrs
Laser Type	Yb-fiber laser; 300W*2
Focus diameter	50-80 $\mu\text{m}$
Power	AC220 V, 16 A
	3.5 kW
Shielding gas	6L/min (Nitrogen)
System size	1070*670*1750 mm
Weight	460 kg
Operating Temperature	18-30 °C
Materials	Support Titanium or Cobalt-Chromium Alloy
Products	Support crowns, copings and partial frames



### Dental equipment and software

- Professional and intelligent 3D printer in metal, designed for dentistry;
- Provide two advanced intelligent softwares for dentistry: iPD and P3DS;
- Over 6 years of testing in the field, well integrated in customer process.

### High efficiency

- 180 dental copings/3-4 hrs;
- 12 partial frames/2.5-3.5 hrs;
- Configured with double laser, printing faster.

### Technical advantages

- Best-in-class printing quality ;
- Advanced software specially designed for dentistry.

### Professional services

- Value-adding service: Digital consultation and training in implant guides and dental appliances, etc;
- Provide emergence management system for customers (optional).

### Consultations for the clients

- Assist in clarifying business value prior to project approval;
- Assist clients' business process optimization from conventional casting to digital 3D printing.



Web: [www.profeta.cn](http://www.profeta.cn)

Email: [service@profeta.cn](mailto:service@profeta.cn)

Add: No.12 Mozhou East Road, Jiangning, Nanjing, China