



Stock Code: 688333.SH

MAKE EASIER MANUFACTURING  
MAKE A BETTER WORLD

## Metal Additive Manufacturing Machine

# BLT-S310/S320



CE Safety  
Certification



Laser FDA Safety  
Certification



ATEX (Explosion Proof)  
Certification



ISO9001:2015 / ISO14001:2015 / ISO45001:2018

### Leading the Industry, All-around Flagship

Aerospace Quality Assurance

Stable Full-substrate Printing

Two Optics Configurations

24-hour Unattended Operation

Uninterrupted Continuous Production



**Multi-batch Iteration**  
Mature technology and stable operation



**Advanced Flow Field Design**  
The forming quality is greatly improved



**Two-way Intelligent Powder Spreading**  
Efficiency increases by 60% Intelligent powder-saving



**Back Blowing Filtration System**  
Filter's life lasts for 1500 hours



**Self-adapting Powder Spreading Correction**  
Deep learning technology makes printing smarter



**Powder-worker Separated in the Whole Process**  
Strengthen occupational health protection



**3D Reconstruction Building Visualization**  
is easy to quality traceability

Supporting Materials	Titanium Alloy, Aluminum, Superalloy, Stainless Steel, High-strength Steel, Tool Steel, Copper Alloy
Build Dimension <sup>(1)</sup>	250mm×250mm×400mm (W × D × H)
Laser Power	500W; 500W×2
Wave Length	1060nm-1080nm
Layer Thickness	20μm~100μm
Maximum Scanning Speed	7m/s
Building Speed <sup>(2)</sup>	25cm <sup>3</sup> /h; 50cm <sup>3</sup> /h
Preheating Temperature	RT +20°C~200°C
Beam Quality	M <sup>2</sup> <1.1
Optics System	F-theta Lens
Recoating	Single/Double Recoating System
Minimum Oxygen Content	≤100ppm
Gas Requirement	Ar/N <sub>2</sub>
Power Requirement	≤8kW; ≤11kW
Supply Voltage	AC380V 3Ph/N/PE
Machine Dimension	3400mm×1200mm×2200mm (W × D × H)
Machine Weight	Approx. 3600kg
Software	Magics; BLT-BP; BLT-MCS

Citations: (1)Excluding substrate thickness; (2)Dependent on part geometry, material and parameter set used.

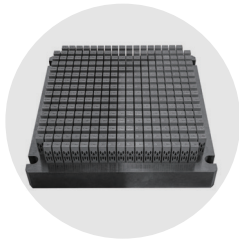




Stock Code: 688333.SH

MAKE EASIER MANUFACTURING  
MAKE A BETTER WORLD

## ➤ BLT-S310/S320 APPLICATIONS



Spinal Fusion Apparatus  
(Exhibit)



Exhaust Nozzle



High Temperature Hollow Blade



Aviation Joint

## ➤ BLT-S310/S320 INTELLIGENT MODULES

### Standard Functions

Self-diagnosis Fault-grading/Real-time Monitoring of the Printing Process/Full Printing Process Traceability/Powder Spreading Quality Control/3D Reconstruction

### Optional Functions

Permanent Filtration System/BLT-MCS Third-party Interconnection/BLT-MES System

## ➤ BLT-S310/S320 AUXILIARY MACHINES



Powder Sieving Machine  
BLT-SF400



Powder Collection Machine  
BLT-WL200



Powder Cleaning Machine  
BLT-QF400

## ➤ BLT-S310/S320 CONSUMABLES AND POWDERS

### Consumable

Scraper/Substrate/Filter Element

### Powder

Titanium Alloy/Aluminum/Superalloy/Stainless Steel  
/High-strength Steel/Tool Steel/Copper Alloy